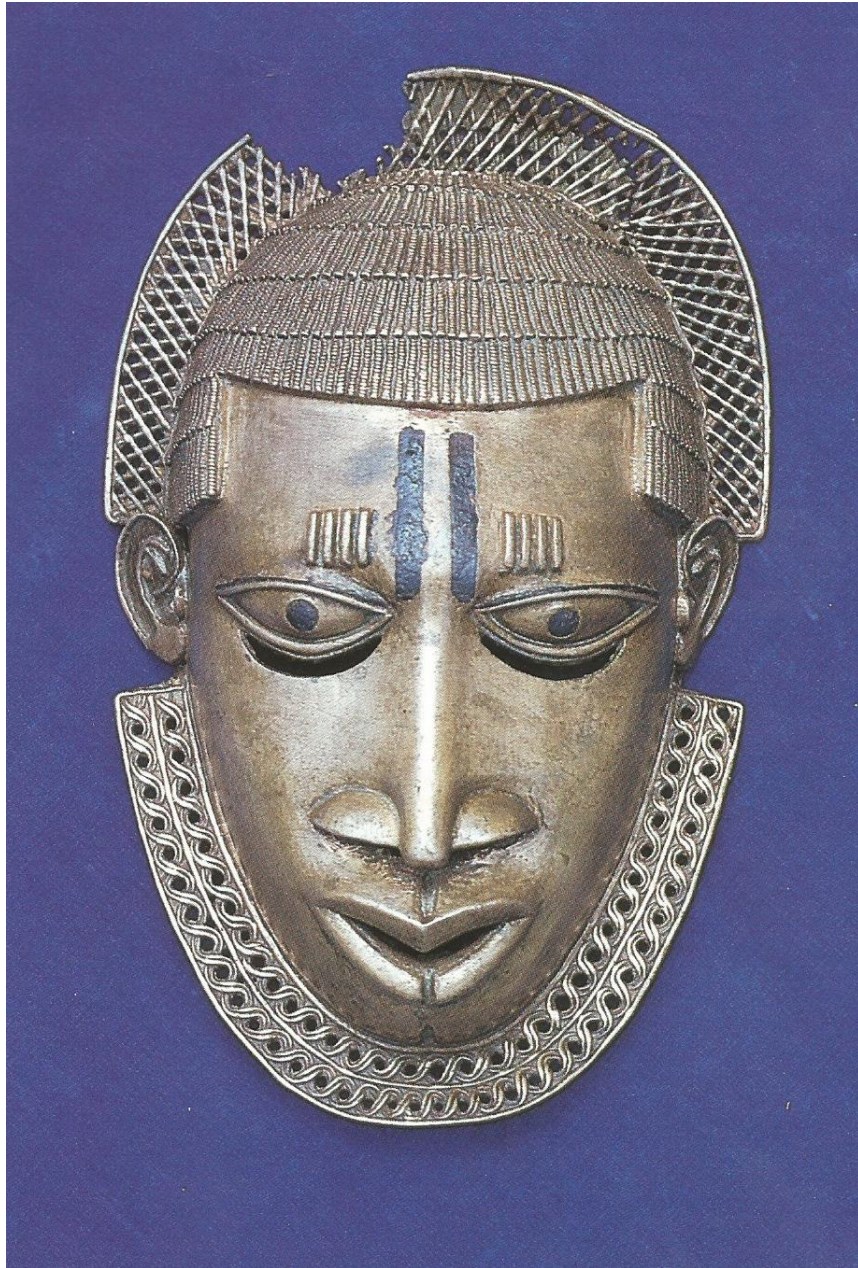


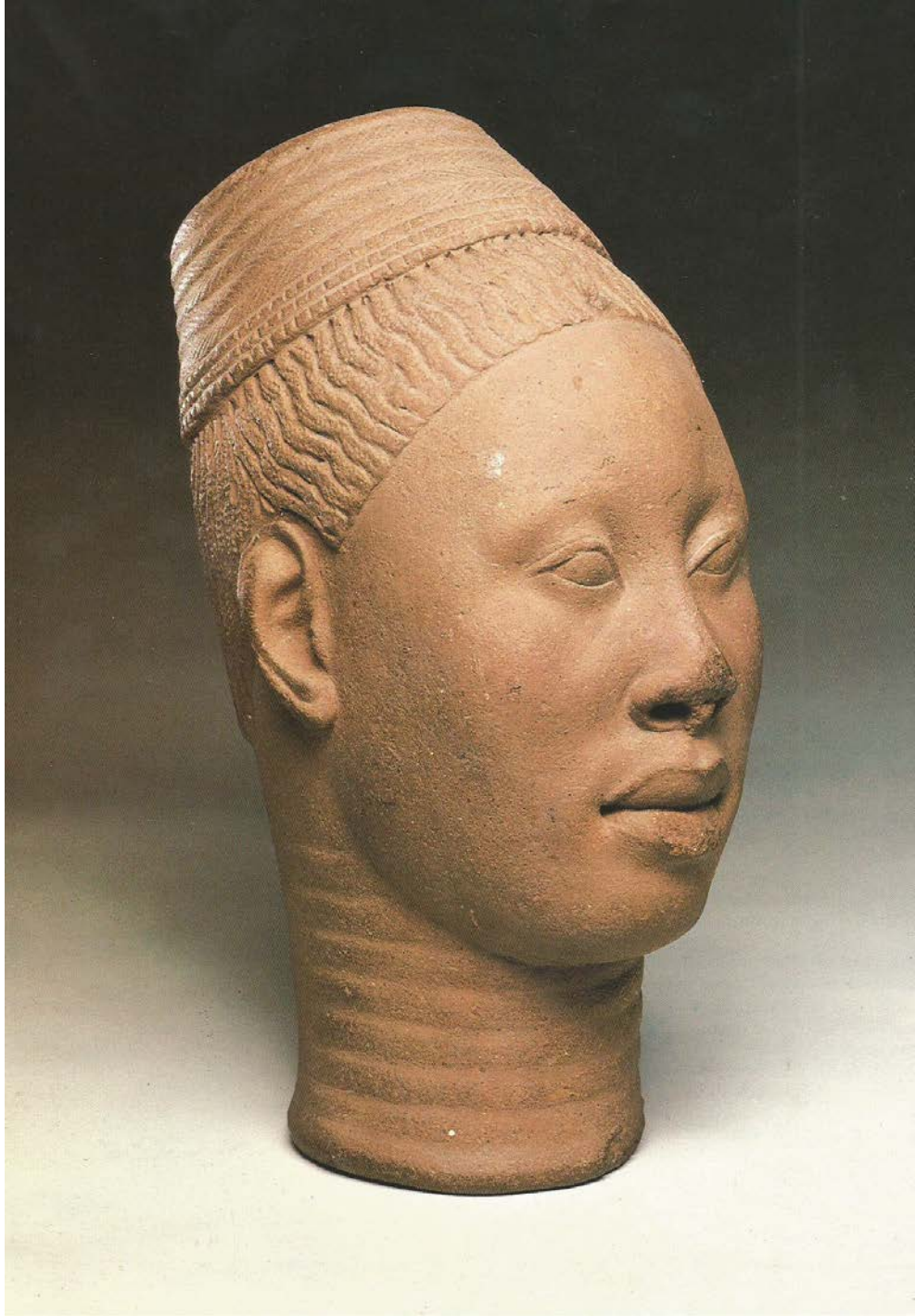
Legacy Gallery: Faces of Nigeria



Costume mask, 16th century, cast brass made in Benin, Nigeria.



Queen Mother of Benin, Nigeria, 15/16th century, bronze.



12th century terracotta from the Oni place in Ife, Nigeria



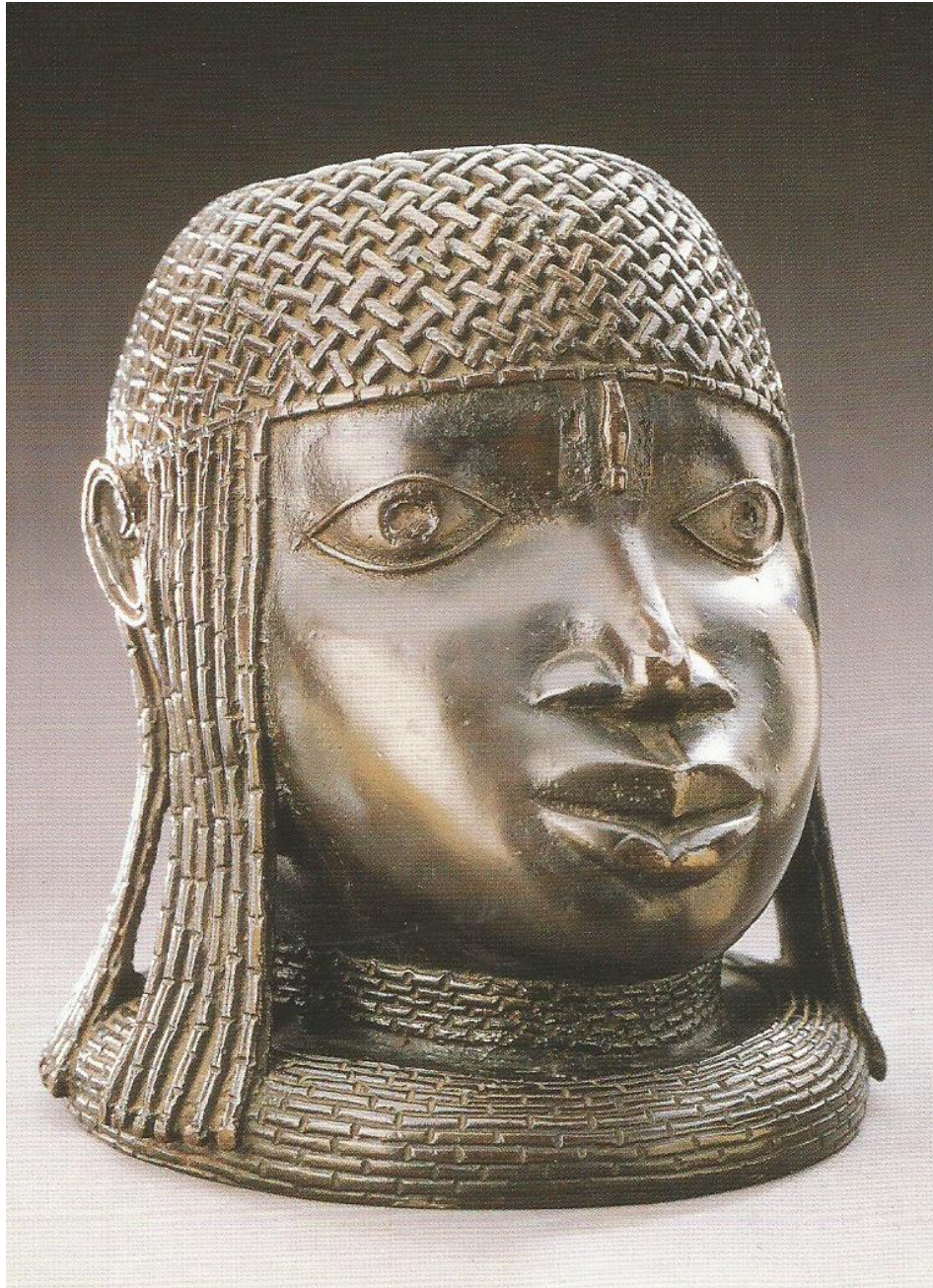
Female figure, Benin, Nigeria, 17th/18 century, brass.



Mid-late 16th century bronze, Benin, Nigeria.



Benin bronze head (Uhunmwun-Elao), Nigeria.



Brass memorial of an Oba in Benin, Nigeria, 16th century.



Oòni (king) of Ife, early 14th /15th century,
made of Zinc brass.



The Oba (in the middle) with attendants, Benin (Edo), 16th century



Ivory Benin pendant mask, 16th century, British Museum, London